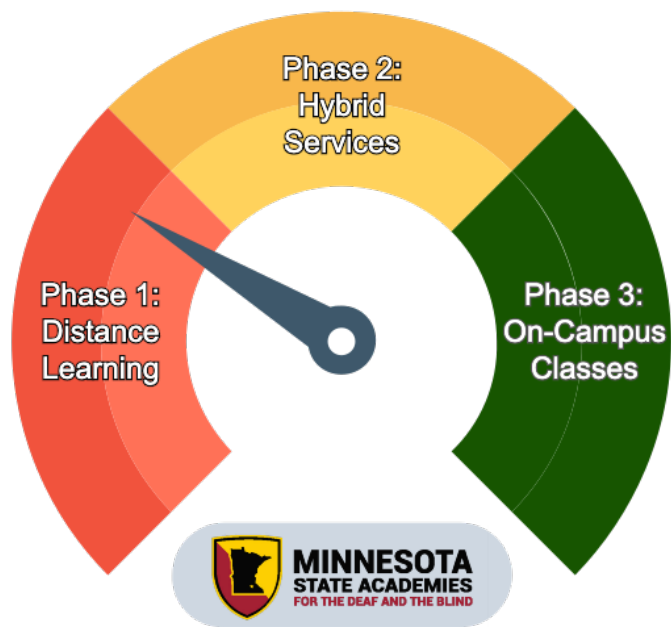




Back to School Phases

September 4, 2020



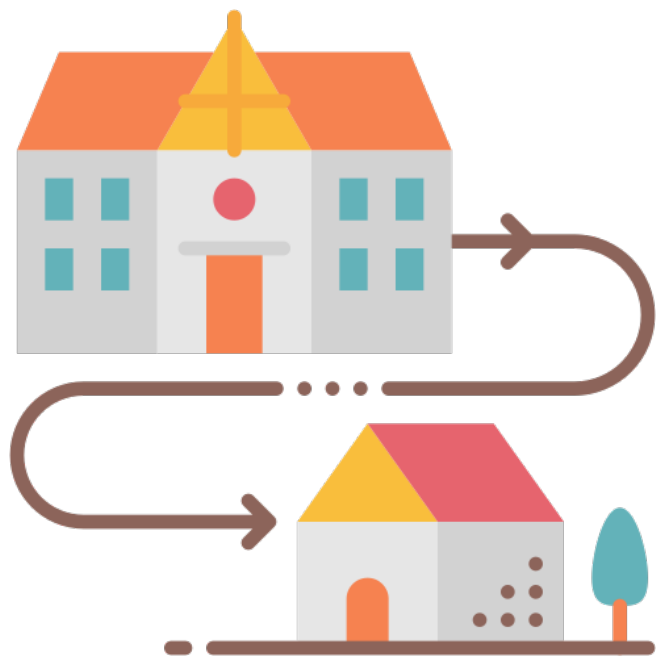
Progress Updates

Below is a breakdown of what will happen during each phase of our instructional programs. We are continually monitoring all health data and working closely with the Minnesota Department of Health (MDH), the Minnesota Department of Education (MDE), and Rice County Public Health Services, as well as considering guidelines from the Centers for Disease Control and Prevention (CDC). Please keep in mind that pending any changes in health data or other information, we may need to modify our plans. For more updates or additional information, please visit www.msa.state.mn.us.



Phase 1: Distance Learning

- Students remain at home
- Teachers and support staff provide services virtually using technology as defined in our distance learning plan.



Phase 2: Hybrid Program

- Due to MSA's unique role as a statewide residential program, our hybrid approach will look different than other traditional hybrid programs used in other school districts (for instance, MSA will not have staggered days on/off campus).
- MSA's hybrid program approach will allow us to bring in certain "pods" of students for on-campus services, while other pods will remain in distance learning.
- Priority will be placed on students who are younger or have additional learning needs that are best met by on-campus services.
- Our hybrid program will allow us to accommodate students to be on campus for evaluations and services that can not be provided remotely, including students who are in distance learning.
- Activities and travel for students who are on-campus will be limited to minimize social interactions and ensure compliance with MDE/MDH guidelines.
- The MSA instructional leadership team will make decisions based on health data, and may make changes to our hybrid program periodically. Changes will be announced to families at least 1 week in advance.
- Students may opt to remain in distance learning.



Phase 3: On-Campus Classes and Services

- All students will be allowed on campus, following MSA's health and safety plan. However, some activities and travel will continue to be limited, based on health data and recommendations from MDH/MDE.
- Students will remain in pods, and safety measures will continue.
- Students may opt to remain in distance learning.